

EURO-MULTICOM

Dispenser



Elegant design!

Easy to handle!

SPECIFICATION

| PUMP AND MOTOR |

- TYPE : REMOTE CONTROL PUMP
- DELIVERY SPEED
 - STANDARD : 45ℓ / MIN
 - HIGH SPEED : 80ℓ / MIN(85ℓ / MIN)
- POWER : AC 220V ± 20%, 50/60 HZ
- CONNECTION : 1 - 1/2" FLEXIBLE PIPE

| FLOW METER |

- TYPE : 4-PISTON POSITIVE DISPLACEMENT METER WITH MICRO MINUTE ADJUSTER
- ACCURACY : ±0.25%(5ℓ / MIN ~ MAX. OUTPUT)

| DISPLAY |

- TYPE : LCD DISPLAY
- READOUT
 - SALE(1") : 6DIGITS(999,999)
 - LITER(1") : 6DIGITS(999,999)
 - UNIT PRICE(1/2") : 4DIGITS(9,999)

| TOTALIZER |

- TYPE : ELECTRO-MAGNETIC TOTALIZER(7 DIGITS)

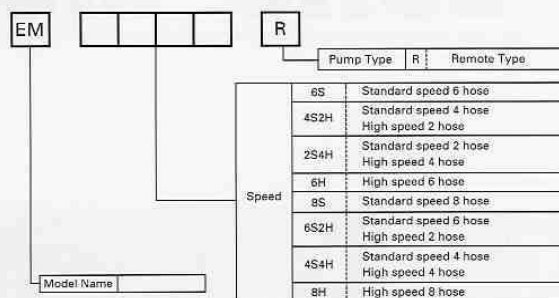
| NOZZLE & HOSE |

- NOZZLE : AUTO NOZZLE
- HOSE
 - STANDARD SPEED : 3/4" X 4M, WITH SINGLE SWIVEL
 - HIGH SPEED : 1" X 4M, WITH SINGLE SWIVEL

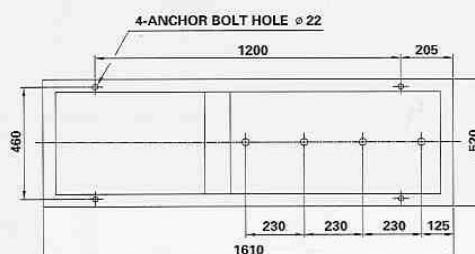
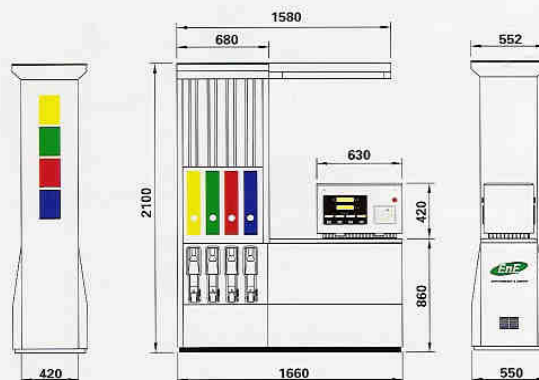
| ENVIRONMENT |

- TEMPERATURE : -20°C(-4°F) ~ +60°C(+140°F)
- HUMIDITY : 5 ~ 95%(UNDER NO CONDENSING)

MODEL NAME



DIMENSIONS for 8 HOSES



EnE Korea EnE Co., Ltd.

■ HEAD OFFICE
JINSUNG-Plaza B/D 6F 678-13 Dungchon3-Dong,
Kangseo-Gu, Seoul, Korea
TEL: (82-2)3661-4007 FAX: (82-2)3661-4911
E-mail: koreaene@koreaene.com

■ FACTORY
420-22, Saekyo-Ri, Baebang-Myun, Asan-Si, Chungnam, Korea
TEL: (82-41)548-9600 FAX: (82-41)548-7240
E-mail: factory@koreaene.com